

MONTHLY MEMBERSHIP PROGRESS REPORT

LOCATION MICHIGAN

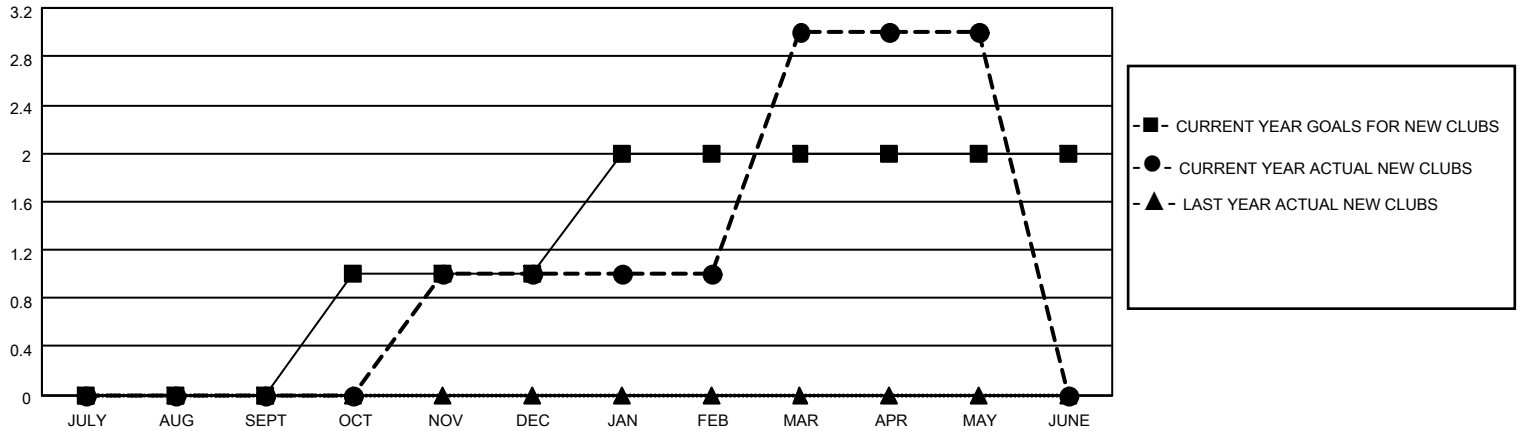
District 11 D2

Results as of: 5/31/2021

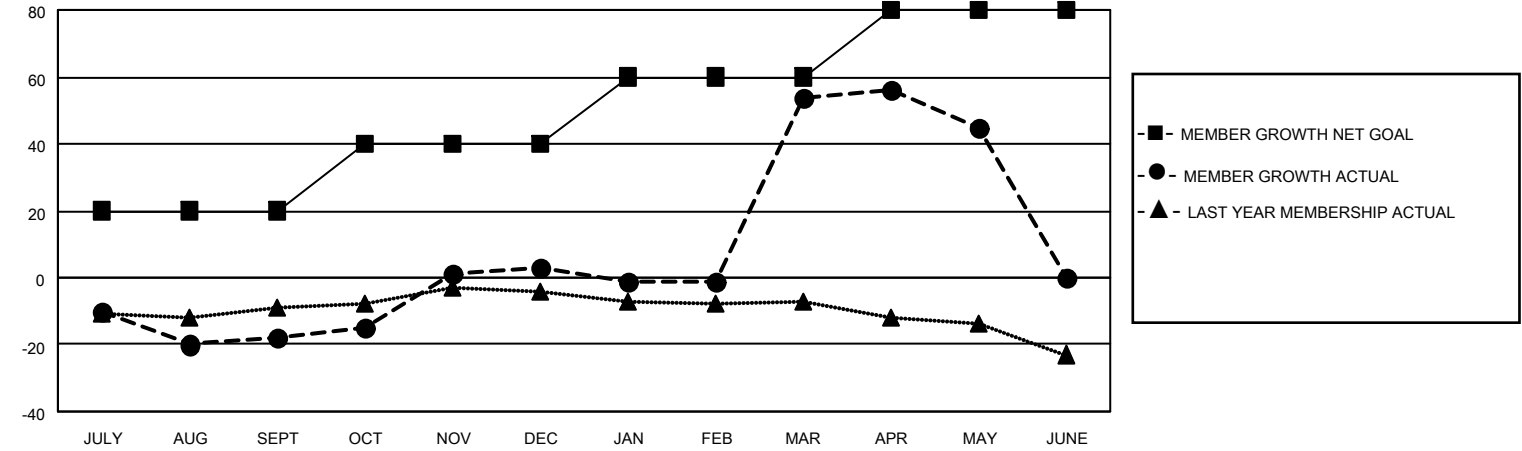
Clubs			
RESULTS FOR 2020-2021			
QUARTER	NEW CLUB GOAL	NEW CLUBS	DROPPED CLUBS
JULY/AUG/SEPT	0	0	0
OCT/NOV/DEC	1	1	0
JAN/FEB/MAR	1	2	0
APR/MAY/JUNE	0	0	0

Members			
RESULTS FOR 2020-2021			
QUARTER	MEMBER GROWTH NET GOAL	MEMBER GROWTH ACTUAL	DROPPED MEMBERS ACTUAL (including transfers)
JULY/AUG/SEPT	20	21	39
OCT/NOV/DEC	20	59	38
JAN/FEB/MAR	20	60	9
APR/MAY/JUNE	20	19	26

GOALS AND ACTUAL NEW CLUBS CUMULATIVE



GOALS AND ACTUAL MEMBERS CUMULATIVE



DROPPED CLUBS: 0	
<u>DROPPED MEMBERS</u>	
DECEASED	17
CLUB CANCELLED	0
OTHER	95
TOTAL	112

28 CLUBS OF 48 ADDED 1 OR MORE NEW MEMBERS

[CLICK HERE FOR CUMULATIVE MEMBERSHIP DATA](#)

<u>GENDER DISTRIBUTION</u>	
MALE	949 (71.95%)
FEMALE	370 (28.05%)

TOTAL FAMILY UNIT MEMBERS	242
FAMILY MEMBERS PAYING HALF DUES	126